



Harrison County Historically Speaking

Modale, Iowa



WHY PRESERVE THIS BIT OF HISTORY?

This panel "Tells the Tale" of an era gone by... part of Harrison County's treasured past. By appreciating the importance of the past, we can continue working in the present to ensure future generations will respect and preserve the enduring history that is represented here. By working to connect our past with the present, the structures on this panel have been identified as being historically significant by Harrison County Tourism as part of ongoing efforts to preserve local history. It is 1 of 10 in a series of panels throughout Harrison County.

For a complete list of panels and locations, go to: <http://destinationharrisonia.com/historically-speaking.html>



Destination Harrison Interpretive Signage Project made possible by funding from the Dean J. King Family Foundation

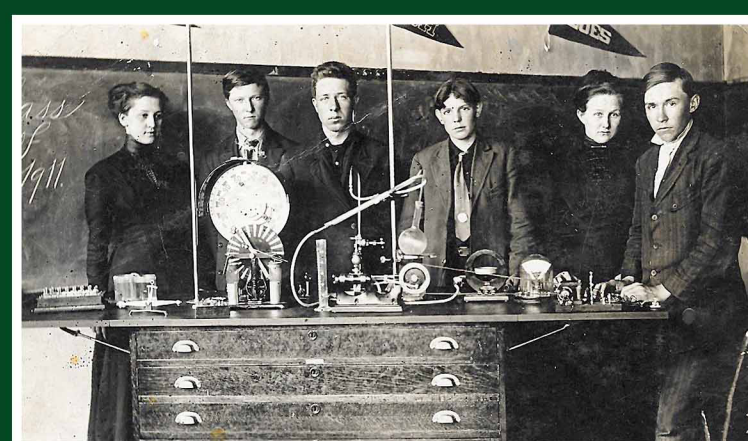
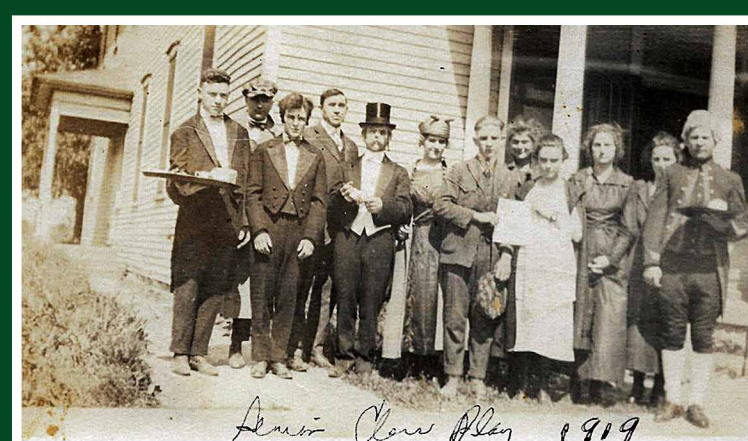
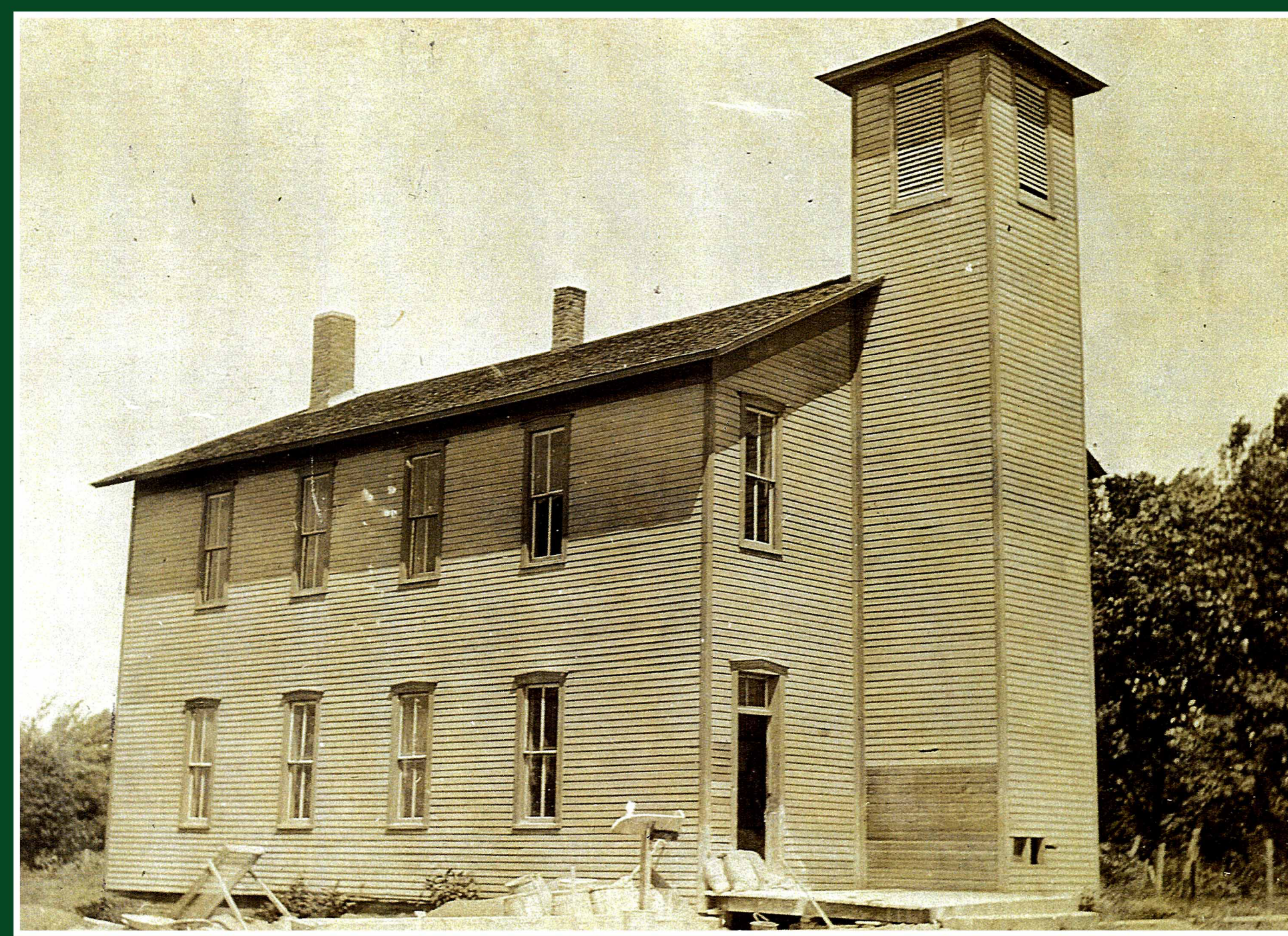
Designed by Harrison County GIS & Mapping in conjunction with Harrison County Tourism

MODALE SCHOOL & MASONIC HALL

The Modale School and Masonic Hall was built in 1880 to serve as a school building for the town. The building served as the school until a modern brick building was erected in 1911. At that time, the Masons moved into the building. The Masons converted the second floor gymnasium into their meeting room. They also constructed an addition to the west end of the building to add a stage. The stage was used as a theater in the 1920s – 30s and provided income for the Masons. The Masons continued to occupy the building until the Lodge was dissolved in 2004. The Modale Masonic Lodge merged with the Missouri Valley Lodge.

While the Masons had control of the building, it served a variety of community functions. Notably, when Modale's school house burned down in the summer of 1957, the building once again served as a temporary school building.

The Masons donated the building to the Town & Country Arts organization, and it was placed on the National Historic Register in 2014.



Below is a glimpse of when the building was a Masonic Lodge. This was taken after the construction of the addition on the end as seen with the mismatched roofing materials.



A replica of the original stage curtain used in the 1920s - 30s can be seen today in the Town and Country Arts building. The original is still in their possession, but is too brittle for public display.

