



Harrison County Historically Speaking

Mondamin, Iowa



WHY PRESERVE THIS BIT OF HISTORY?

This panel "Tells the Tale" of an era gone by... part of Harrison County's treasured past. By appreciating the importance of the past, we can continue working in the present to ensure future generations will respect and preserve the enduring history that is represented here. By working to connect our past with the present, the structures on this panel have been identified as being historically significant by Harrison County Tourism as part of ongoing efforts to preserve local history. It is 1 of 10 in a series of panels throughout Harrison County.

For a complete list of panels and locations, go to: <http://destinationharrisonia.com/historically-speaking.html>



Destination Harrison Interpretive Signage Project made possible by funding from the Dean J. King Family Foundation

Designed by Harrison County GIS & Mapping in conjunction with Harrison County Tourism

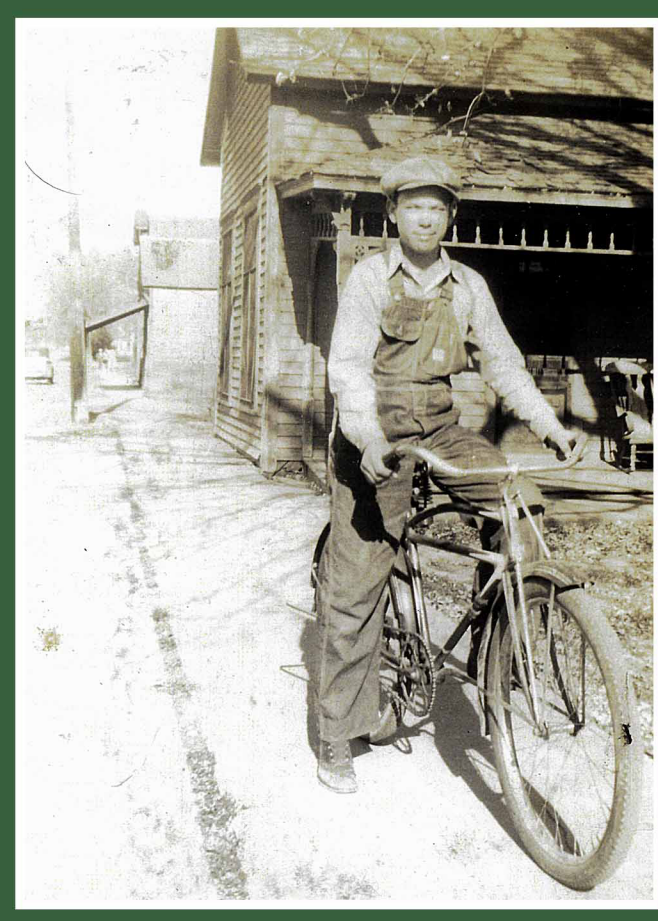
SPOONER-HOLETON HOUSE

The Spooner – Holeton House was built in 1870 to be used as a drug store. Various families have lived there throughout its existence. It was purchased in 1890 by the Irving Spooner family who lived there until 1922. In the 1930s, three families lived here each having two rooms a piece. In the early 1940s the Spooner-Holeton house served as the Mondamin Library. However, it was a private residence during that time with only part of the house being used as the library. The Spooner-Holeton House was purchased in 1948 by the Holeton family. Subsequently, the town's library moved around from a number of houses and buildings on Main St. prior to finding a home in a permanent structure where it exists today. Larry Stevens purchased it in 1993 and restored it in 2006. It is now utilized as a museum furnished in an 1880s style.

Lois & Opal Spooner.



Spooner - Holeton House circa 1930s Lawrence Stevens on bicycle.



Lloyd & Jim Holeton in 1976.



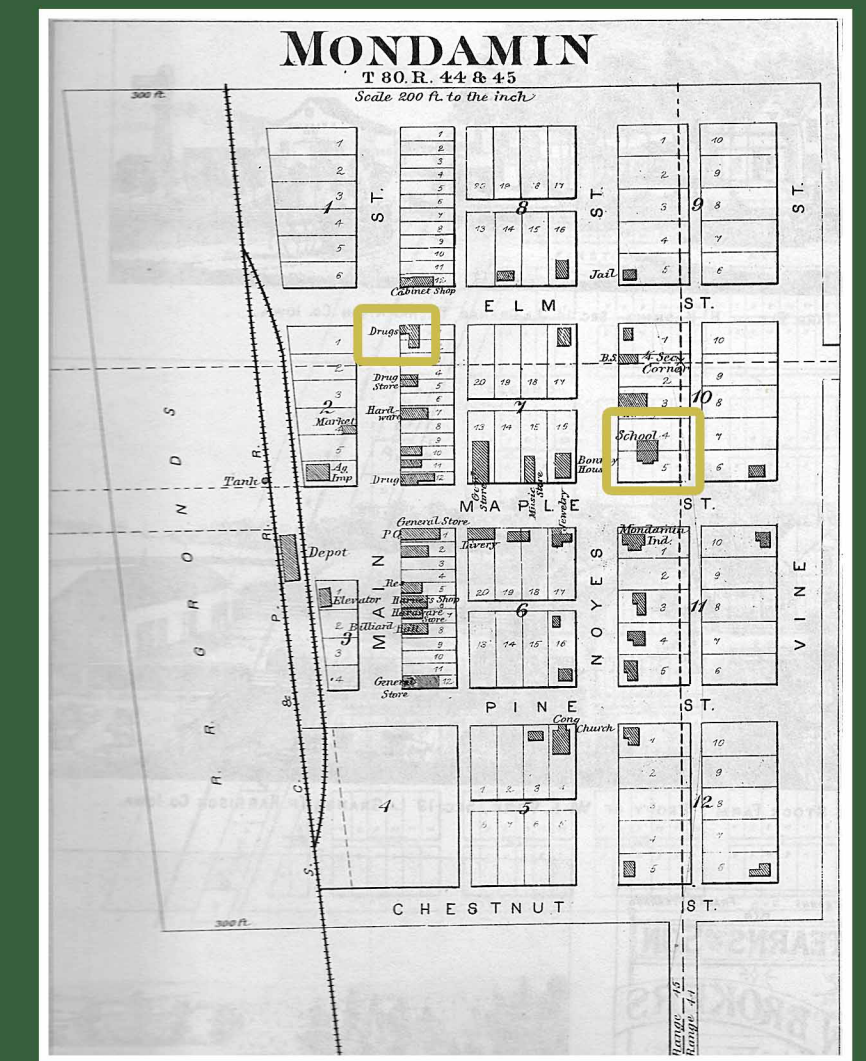
Spooner - Holeton House in 2018.



THE MONDAMIN SCHOOL

The Mondamin School was built in 1883 on the corner of Noyes St. and Maple St. It was home to all grades until a new school building was built in an adjacent lot. The schools were then referred to as the Big School (New school) and the Little School (Old school). The elementary grades remained in the Little School while the older grades were located in the Big School. The Big School was sold to the Reorganized Church of Jesus Christ of Latter Day Saints (RLDS) church in 1898 and was moved 1/2 block east and 1/2 block south. The church closed its doors in 1928 and the building was sold to the J.L. Gillette family to be used as a home. It was purchased and later restored by Larry Stevens. It is currently a private residence.

Location of the Spooner-Holeton House and Mondamin School on the 1884 Mondamin plat.



Mondamin Schoolhouse photo taken circa 1892.

